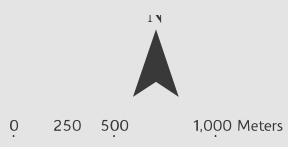
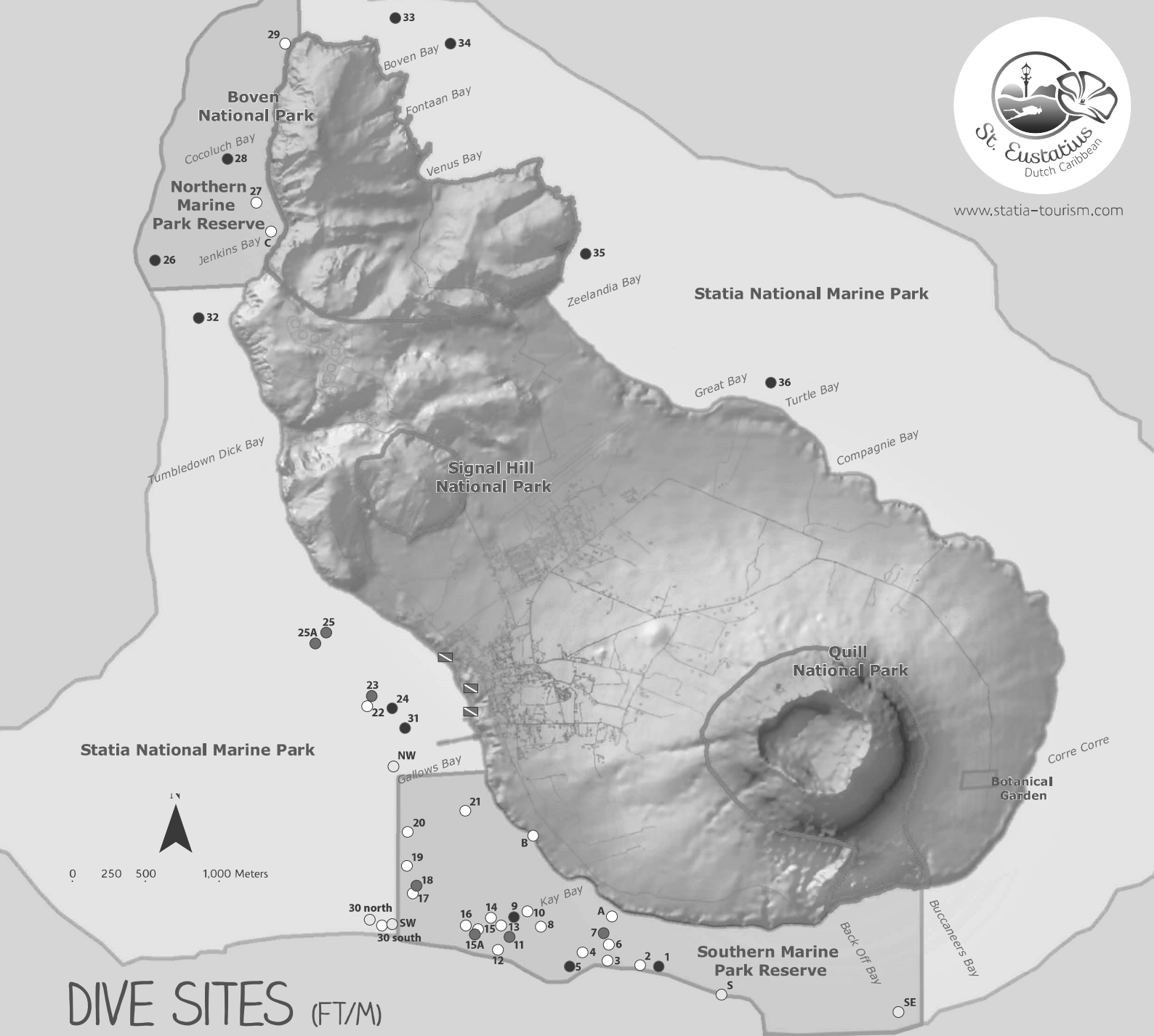




www.statia-tourism.com



# DIVE SITES (FT/M)

- 1 Drop Off East (69/21)
- 2 Drop Off West (96/29)
- 3 Grand Canyon (86/26)
- 4 Cliffs / Down South (67/20)
- 5 Coral Gardens (99/30)
- 6 Mushroom Gardens (52/16)
- 7 The Humps (43/13)
- 8 Valley of Sponges (43/13)
- 9 Five Fingers North (47/14)
- 10 Five Fingers South (52/16)
- 11 The Ledges (61/19)
- 12 Anchor Reef (74/23) **H**
- 13 The Blocks (55/17)
- 14 Hangover (55/17)
- 15 Anchor Point South (62/18) **H**
- 15A Anchor Point West (62/18) **H**
- 16 Anchor Point North (62/19) **H**
- 17 Twin Peaks (71/22)
- 18 Barracuda Reef West (74/23)
- 19 Nursing Station (62/19)
- 20 Blair's Reef (62/19)
- 21 Crook's Castle (35/11)
- 22 Triple Wreck (55/17) **W H**
- 23 Double Wreck (67/20) **W H**
- 24 Stingray City (50/15) **W H**
- 25 STENAPA Reef (56/17) **W**
- 25A Chien Tong (56/17) **W**
- 26 Doobie's Crack (94/29)
- 27 Outer Jenkins Bay (40/12)
- 28 Twin Sisters (58/18)
- 29 Gibraltar / North Point (59/18)
- 30 **north** The Charles L. Brown (102/31) **W**
- 30 **south** The Charles L. Brown (102/31) **W**
- 31 Blue Bead Hole (55/17)
- 32 Aquarium (58/18)
- 33 North Man (99/30)
- 34 Five Canyons (86/26)
- 35 The Cave (67/20)
- 36 English Quarter (33/10)

## Reserve Buoys:

- NW** (62/19)
- SW** (62/19)
- S** (98/30)
- SE** (100/28)

## Snorkel sites:

- A** Blind Shoal (19/6)
- B** Twelve Guns (17/6) **H**
- C** Inner Jenkins Bay (17/6)

- H** Historical Dive
- W** Wreck Dive
- Dive site with No Buoy
- Reserve Boundary Marker / Harbour
- Dive site for vessels < 30 tonnes
- Dive site for vessels < 50 tonnes
- ▤ Dive Center